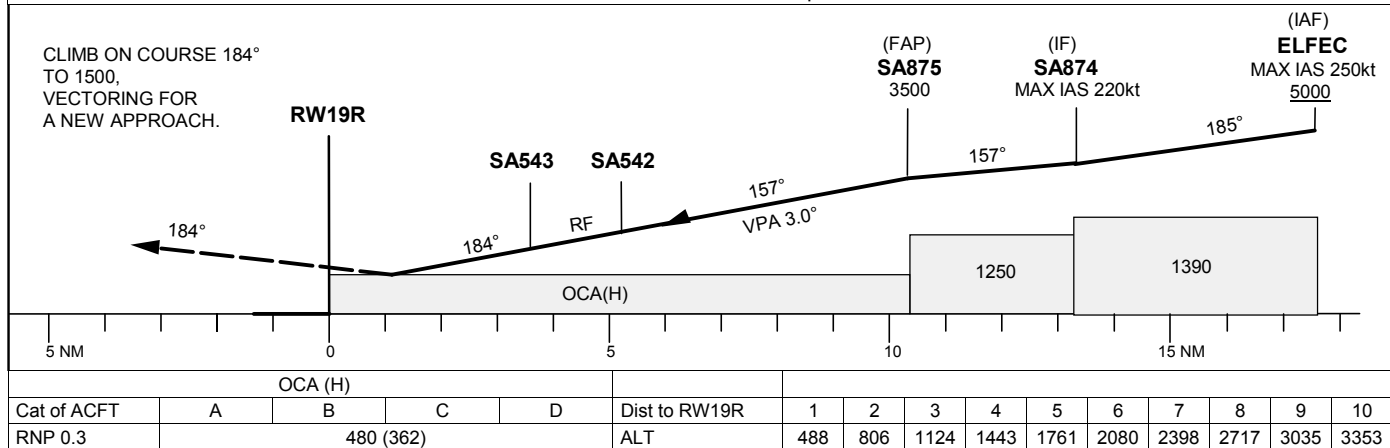
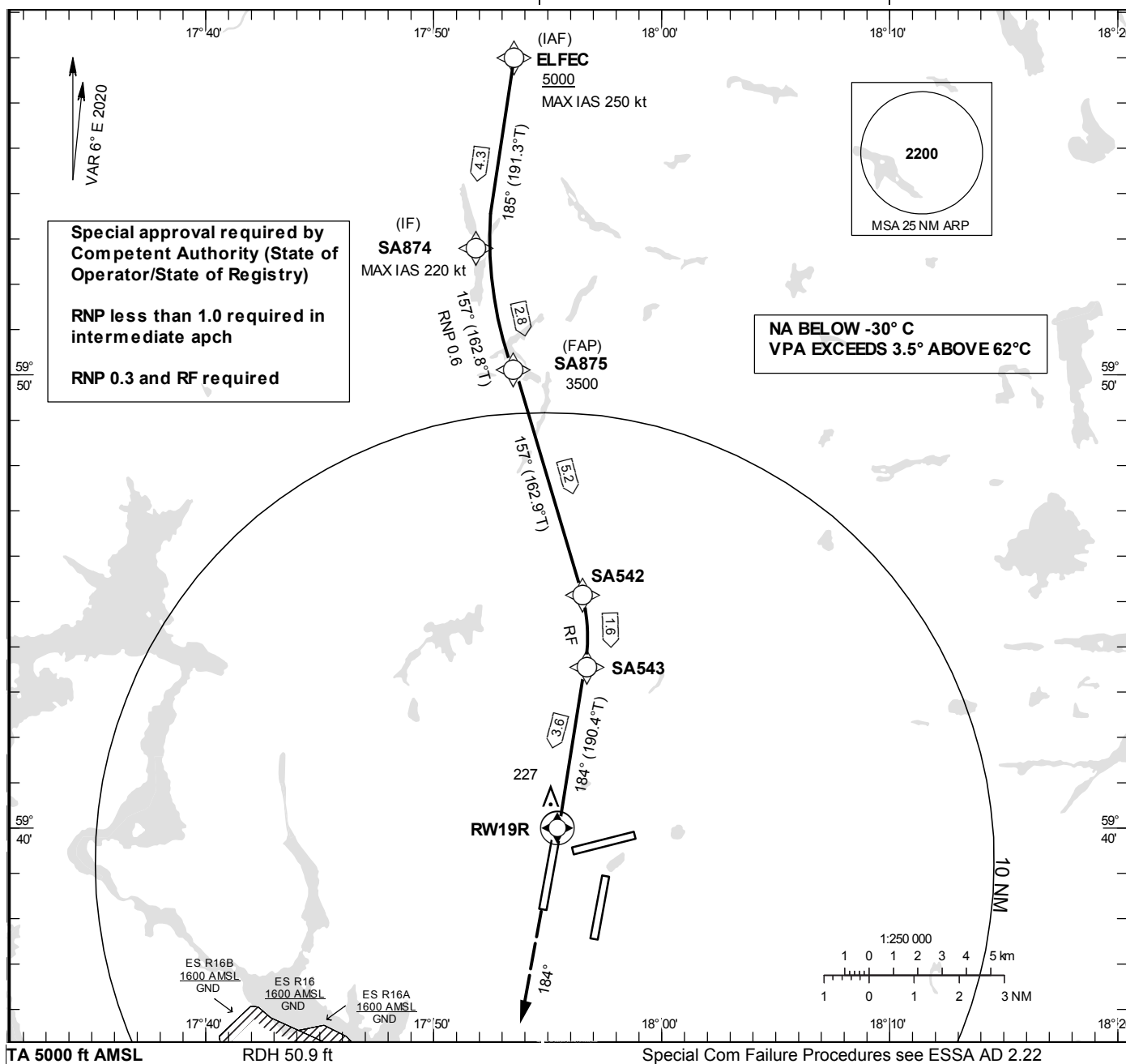


**STOCKHOLM/Arlanda**  
**RNP y RWY 19R (AR)**

**INSTRUMENT  
APPROACH  
CHART – ICAO**

**THR ELEV 118.2 ft, AD ELEV 138 ft**  
OCH are related to THR.  
BRG are MAG (True).  
ALT, HGT and ELEV in ft.

**ARLANDA TOWER** 128.730/  
118.505/125.130  
**ARLANDA ATIS ARR** 119.005  
**STOCKHOLM APPROACH** 123.755



STOCKHOLM/Arlanda

Prescribed Coding/Description RNP y RWY 19R (AR)

Path Desc	Waypoint Identifier	Fly-over	Course °M(°T)	Dist (NM)	Turn Dir	Rest Alts (ft AMSL)	Speed Limits (kt)	VPA/ RDH (°/ft)	ARC Radius (NM)	ARC Center	Nav Spec
IF	ELFEC	-	-	-	-	+5000	-250	-	-	-	RNP 1.0
TF	SA874	-	185° (191.3°)	4.3	-	-	-220	-	-	-	RNP 1.0
TF	SA875	-	157° (162.8°)	2.8	-	@3500	-	-	-	-	RNP 0.6
TF	SA542	-	157° (162.9°)	5.2	-	-	-	-3.00	-	-	RNP 0.3
RF	SA543	-	-	1.6	R	-	-	-3.00	3.3665	SA876	RNP 0.3
TF	RW19R	Y	184° (190.4°)	3.6	-	@169	-	-3.00/50.9	-	-	RNP 0.3
CA	-	-	184° (190.4°)	-	-	+1500	-	-	-	-	RNP APCH
VM	-	-	184°	-	-	@1500	-	-	-	-	RNP APCH